



United Way
of Hancock County

2018 ANNUAL REPORT



UNITED WE WIN

LIVE UNITED

OUR MISSION

To measurably improve people's lives in Hancock County.

OUR HISTORY

Starting as a combined agency fund drive to reduce the overhead costs of fundraising, the Three-Way Drive of Youth Activities organized in the 1930s' to support Hancock County's Camp Fire Girls, the YMCA and Boy Scouts.

In 1955 the group re-organized as the United Community Fund and expanded its impact to include programs addressing health and safety-net services with the addition of Cancer Patient Services, Hancock County Mental Health Association, American Red Cross and Salvation Army.

Finally, on March 14, 1972 and in favor of keeping with current trends of United Funds at that time and to take better advantage of national campaign advertising, the United Community Fund voted in favor of changing its name to the United Way of Hancock County.

Since then, United Way of Hancock County has supported more than 150 programs and services impacting the areas of health, education and financial stability to measurably improve people's lives in Hancock County.

Staff

Chris Ostrander, Interim CEO

Heather Loughman, Finance Director

Michael Momany, Resource Development Director

Judy Pusateri, Assistant Resource Development Director

Beverly Phillips, Community Services Director

Heather Heilman, Community Impact Director

Teresa White, Executive Administrative Assistant

LIVE UNITED

FROM OUR INTERIM CEO

The United Way team and our community thank you for another successful campaign in 2018. We are truly blessed to live and work in such a generous community.

Community leaders set a vision several years ago to direct funding toward solutions creating system-level change around local community-identified issues.

The United Way assembled a transformation committee comprised of United Way staff, board members, and community partners to create the framework for a funding approach allowing for immediate and long-term success. This effort produced our Agenda for Change, which can be viewed on our website.

Once again, thank you for allowing the United Way of Hancock County the privilege to serve our neighbors with your donor dollars. You will see in this report how your donations are working to positively affect change in the areas of health, education and financial stability.

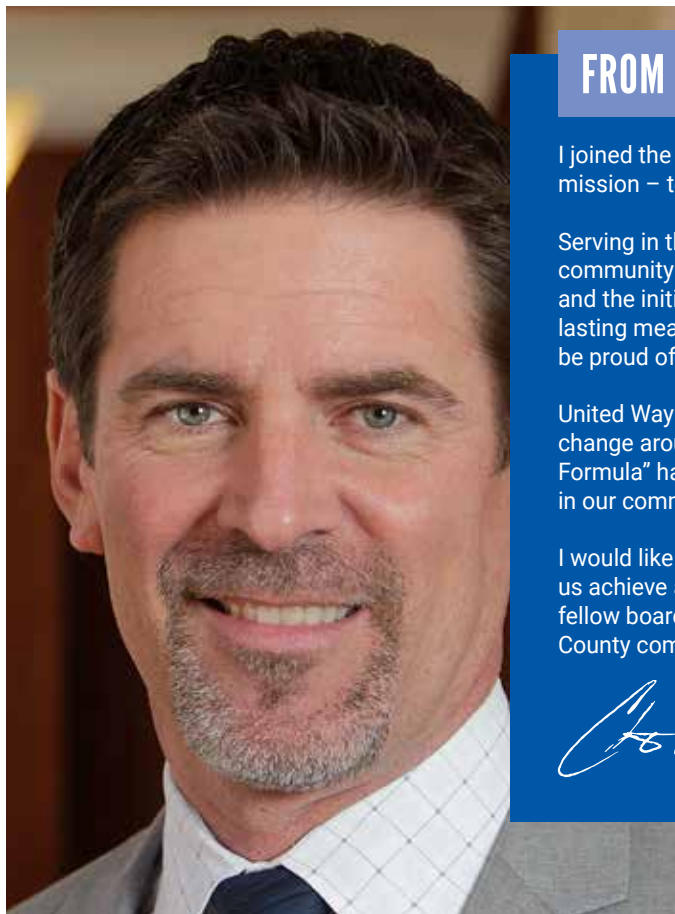
As we transition into 2019, we pledge to improve upon our work as a community collaborator to measurably improve people's lives in Hancock County.



CHRIS OSTRANDER

LIVE UNITED





FROM OUR BOARD CHAIR

I joined the United Way of Hancock County's board because I believe in its mission – to measurably improve people's lives in Hancock County.

Serving in this capacity for the past year, I have witnessed the generosity of our community and gained a deeper appreciation for the work of our funded partners and the initiative work happening daily across our community. The result is a lasting measurable impact on the lives of those with the greatest need. We can be proud of these efforts.

United Way is committed to supporting opportunities addressing system-level change around our most pressing issues. Change can be difficult but the "Findlay Formula" has taught us to embrace change that leads to lasting, positive impact in our community.

I would like to acknowledge our donors and their year over year support in helping us achieve a successful campaign. I would also like to recognize and thank my fellow board members, staff, committee members and the Findlay-Hancock County community for allowing me the opportunity to serve this past year.

CHRIS WEBB

BLANCHARD VALLEY HEALTH SYSTEMS

LIVE UNITED

UNITED WAY OF HANCOCK COUNTY BOARD OF DIRECTORS 2018

LIVE UNITED™

Chris Webb
Board Chair
Blanchard Valley Health System

Amy Hackenberg
Board Chair Elect
First Federal Bank

Tim Mayle
Strategic Planning Chair
The Findlay Hancock County Alliance

Christie Ranzau
Past Board Chair/Secretary/Treasurer
Rooney & Ranzau, Ltd.

Bill Doyle
Community Solutions Chair
University of Findlay

Ginger Jones
2018 Campaign Chair
Retired

Michael Knoll
Findlay Young Professionals Representative
Marathon Petroleum Corporation

Karis Brown
Student Representative
Van Buren High School

Margaret Ford
Rowmark, Inc.

Karen Jones
Retired

Chris Ward
University of Findlay

David L. Whitehart
Marathon Petroleum Corporation

Colleen Lazar
Gordon Flesch

Bill McCleave
Marathon Petroleum Corporation

John Winstel
Cooper Tire & Rubber

Eric Ferguson
Movement Church

Lt. Jim Mathias
Findlay Police Department





HEALTH

3,780

3,780 youth and adults were involved in drug and alcohol prevention and intervention programs.

EDUCATION

3,335

3,335 children and youth were impacted by programming through child care services and youth organizations.





INCOME / FINANCIAL STABILITY

393

393 men, women and children were sheltered or assisted with transitional housing through case management or fleeing domestic violence.

INITIATIVE OUTCOMES

LIVE UNITED®

All children in Hancock County entering kindergarten will arrive to their first day of school ready to learn.

- Pre-K Scholarships – Awarded to the underserved in both the city and county schools.
- Dolly Parton Imagination Library – Children in Hancock County enrolled in this program will receive a book each month from birth to age five free of charge.

DID YOU KNOW IN 2018...

DOLLY PARTON IMAGINATION LIBRARY DISTRIBUTED

26,689

BOOKS TO CHILDREN

UNDER THE AGE OF 5 IN HANCOCK COUNTY

INITIATIVE OUTCOMES

LIVE UNITED®

Students in the Findlay-Hancock County Schools will obtain soft skills necessary for entering the workforce.

Programs UWHC funded in 2018 to support this outcome:

- Raise the Bar
- The Leader in Me Program

THE LEADER IN ME IS AN INNOVATIVE PROGRAM THAT TEACHES 21ST CENTURY LEADERSHIP AND LIFE SKILLS

The Leader in Me is an innovative program that teaches leadership and life skills to students and creates a culture of student empowerment based on the principle that every child can be a leader. Based around Stephen Covey's 7 Habits of Highly Effective People, the Leader in Me is being implemented into Findlay-Hancock County schools to serve as a foundation for building skills. Examples of some of the soft skills being taught include: leadership, responsibility, accountability, problem solving, adaptability, and teamwork. Goal: All schools in the county will implement this program by 2025. Current: 10 of 29 schools are actively participating in the program.



Organizations and Programs funded through the Halt Hunger Initiative:

Lutheran Social Services -
Emergency Food Pantry

Christian Clearing House -
Caring Cupboard Program

Salvation Army –
Emergency Food Pantry

West Ohio Food Bank –
Food Distribution

YMCA Feed-A-Child –
Weekend Meals

Community Gardens of Hancock County

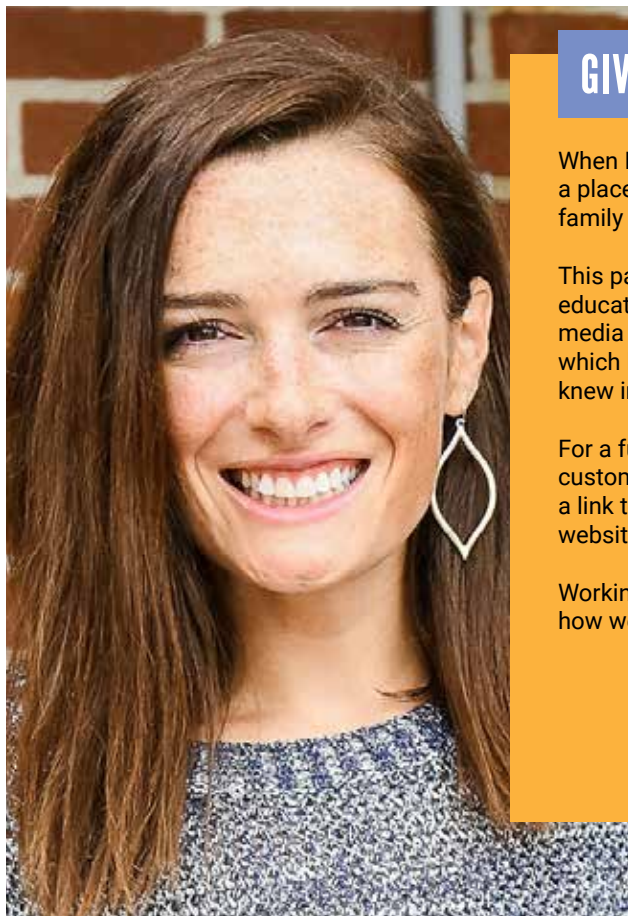
DID YOU KNOW IN 2018...

THE WEST OHIO FOOD BANK DISTRIBUTED

651,827

POUNDS OF FOOD

TO FOOD PANTRIES IN HANCOCK COUNTRY.



GIVE

When I opened Shimmery Belle Boutique in 2016, one of my goals was to get to a place where we could give back a percentage of our sales to an organization, family or person in need.

This past year we rolled out our charitable giving program and began to educate ourselves on current local needs. A story in one of the local social media blogs highlighted the number of children on free and reduced lunches which led me to reach out and learn more about the Feed-A-Child program. I knew immediately I wanted to help.

For a full month, staff shared information about Feed-A-Child with our customers and promoted the program on our social media pages including a link to the original blog and the United Way of Hancock County page and website.

Working with the United Way was a great experience and we are excited to see how we can continue to help in the future.

SHENNA GONZALEZ
SHIMMERY BELLE BOUTIQUE

LIVE UNITED

ADVOCATE

I am very honored to be leading the 2019 fundraising effort for United Way of Hancock County. I have been a lifelong believer in the power of United Way and its ability to have a positive impact in the communities it serves.

As United Way shifts its funding from a program-based to an initiative-based approach, with defined metrics and measurable outcomes, it is better equipped to identify the root causes of many challenges facing our community. Whether dealing with youth hunger, opioid abuse, or simple transportation issues, the approach is the same; identifying the root causes contributing to social problems in the community, and channeling resources to resolve those root causes. This exciting new approach will allow us to be more successful in dealing with many of the serious challenges we face in our community.

I look forward to working with United Way staff and volunteer cabinet members to make this year's campaign successful and have some fun at the same time!

BILL CONLISK
2019 CAMPAIGN CHAIR

LIVE UNITED





VOLUNTEER

United Way of Hancock County is pleased to honor John Platt as the 2018 recipient of the Jeri Bjorling Memorial Distinguished Volunteer Award.

John has generously given of his time, talent and treasure to United Way for more than nine years. His initial service began as an impact grant review team member progressing to an assistant impact team chair. He currently serves as an Impact Team Chair.

His analytical nature and humble disposition allow him to work toward consensus with review team members while safely exploring difficult and pressing questions to ensure donor dollars are used to create measurable success.

John is a Findlay native and currently resides in Arlington with his wife Sue. He spent 25 years in industrial engineering, cost analysis and IT management positions at RCA and then as an instructor in management at Rhodes State College (Lima). In 1972, he was appointed by Judge Moorehead to the original board of trustees of the newly organized Findlay-Hancock County District Public Library. John also serves on the Food Security and Transportation Coalitions, is an avid gardener and member of the Men's and Women's Garden Club of Findlay.

JOHN PLATT
DISTINGUISHED VOLUNTEER AWARD

LIVE UNITED

SECOR SCHOLAR

United Way of Hancock County's Secor scholarship committee is pleased to announce Findlay High School senior Victoria Denike as this year's United Way Foundation Secor Scholar.

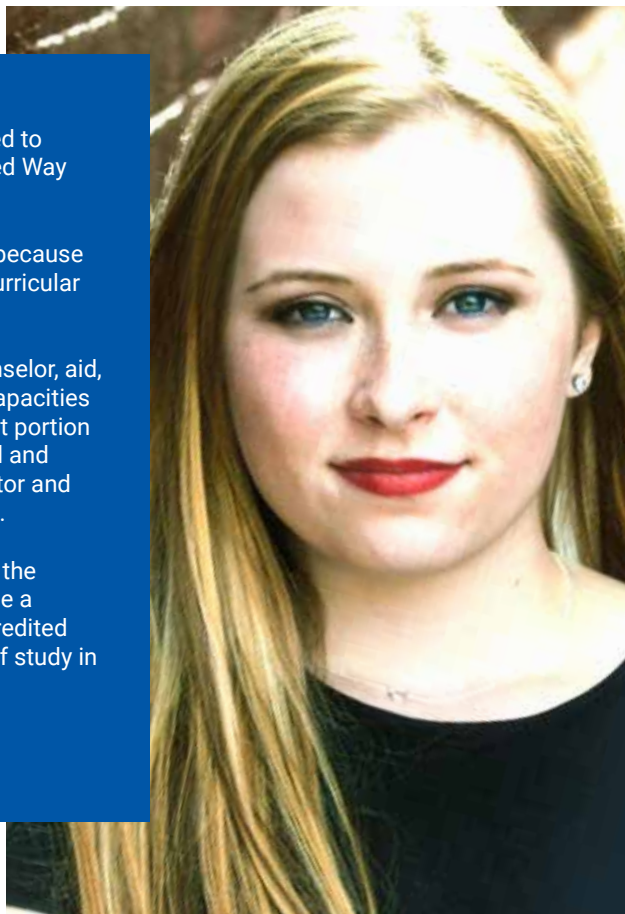
The daughter of Dr. Michael and Jennifer Denike, Victoria was selected because of her volunteerism, academic accomplishments, involvement in extracurricular and school activities and her ability to exemplify leadership skills.

Victoria has given back to other youth in the community as a camp counselor, aid, educator or assistant and can often be found volunteering in different capacities for local nonprofit, church and school events. She has spent a significant portion of her high school career participating in show choir as well as in school and community theater productions as a featured performer, assistant director and choreographer. Victoria intends to pursue a degree in theater education.

Secor Scholarship is a \$2,000 renewable scholarship and a memorial to the Steven and Doris Secor bequest. Candidates for this scholarship must be a high school senior living in Hancock County with plans to attend an accredited institution of higher learning full time to pursue an undergraduate field of study in the subsequent academic year.

VICTORIA DENIKE
FINDLAY HIGH SCHOOL

LIVE UNITED





NONPROFIT LEADER

United Way of Hancock County's 2018 Nonprofit Leader of the Year is Nichole Coleman, Veterans Service Officer and Executive Director of Hancock County Veterans Service Office.

Nichole is a U.S. Air Force veteran and served during Desert Storm in Saudi Arabia and Operation Joint Endeavor in Bosnia.

Since assuming her role in 2011, the VSO has tripled its number of veterans served and increased VA expenditures for county veterans by more than 8.4 million dollars. She is also responsible for the implementation of two innovative programs providing a better quality of life for veterans.

Nichole serves on the Advisory Committee on Veterans' Employment, Training and Employer Outreach for the U.S. Department of Labor and as the Vice President for the National Association of County Veterans Service Officers. She is active on the Hancock County Board of Corrections Committee and the Hancock County Job and Family Services Planning Committee and facilitates a group she started at her church called Veteran's Discovering New Life.

In addition to her community investment activities, Nichole operates her own photography business, Nichole Renae Portraits, and enjoys spending time with her two grown children and husband, Jimmy also an Air Force veteran.

NICHOLE COLEMAN
HANCOCK COUNTY VETERANS SERVICES

LIVE UNITED

COMMUNITY PARTNER AWARD

The United Way of Hancock County is pleased to honor Chuck Bills and Ohio Logistics with this year's Community Partner Award.

Chuck, his family-owned business and associates look out for their neighbors in need through support and promotion of local nonprofits and their programs including: United Way of Hancock County, Flag City Honor Flight, Findlay Hope House, Feed-A-Child, Habitat for Humanity and many more.

Chuck is active in the Findlay-Hancock County community and has served on multiple boards including the Chamber of Commerce, Economic Development and The Alliance, Community Improvement Corporation, Community Development Foundation, the University of Findlay Business Advisory Board, and the Owens Foundation Board.

An Indiana native, Chuck has made this community his home with wife Dee Dee and family. Since 1988, Ohio Logistics has grown from a single warehouse into 21 locations in five states with more than 275 employees.

Thank you for your dedication to this community and for showing us what it means to LIVE UNITED.

CHUCK BILLS
OHIO LOGISTICS

LIVE UNITED



SPONSORSHIPS & IN KIND

LIVE UNITED™

Ag Credit. ACA
Agribusiness
Alexandria's
Anderson Tractor Supply
Arlington Vet Clinic
Bistro on Main
Blanchard Valley Health System
Brian Ricker
Brian Welty
Buggy Whip Cake Art Studio
Circle of Friends
City of Findlay
Coffee Amici
Cooper Tire & Rubber Company
D & H Meats
David & Gloria Thomas
Dave & Linda Siferd
Dave Lortz
Doug Bushong, Ohio Surplus
Findlay Brewing Company
Findlay Chrysler, Dodge, Jeep, Ram
Findlay Country Club
Fireside Brick Oven Pizza Pub & Grill
First Federal Bank

Gilbane Construction
Goodman Hay & Straw
Greek Garden
Hancock County Agricultural Society
Hancock County Farm Bureau
Hitchings Insurance
Homebuilders Association
Jac-B's
Jerry Lawerence
Joey Fratellos's Pizzeria
LaRiche Cadillac
LaRiche Toyota Subaru
Legacy Farmers Cooperative
Legends
Logan's Irish Pub
Main Street Deli
Mancy's Steakhouse
Mennel Milling
Parke's Power & Equipment
Poet Refining - Fostoria
Poet Refining - Leipsic
R & J CheeseCake Shoppe
Reineke Family of Dealerships
St. Mark's Methodist Church

Star of the West Milling
Stix
Tall Timbers Park
The Bourbon Affair
Tri County Veterinary Clinic
Vorst Cabinets
We Serve. Coffee
Whirlpool
Wine Merchant
Your Perfect Day

CORPORATE GIFTS 2018

LIVE UNITED®

ADP	Fresh Encounter, Inc.	Professional Appraisal Services
Advanced Drainage Systems	Goodman Hay & Straw	Rawson O.E.S. Chapter 550
Arcadia Auto Service, LLC	GSW Manufacturing, Inc.	Rowmark, LLC
Arlington Natural Gas Co.	H & O Services	Sinoma-PMC
Arlington Vet Clinic	HHWP Community Action Commission	St. Mark's United Methodist Church
Ball Metal Beverage Packing Division	Hitchings Insurance Agency	Streacker Tractor Sales
Bindel's Appliance	Hosler-Corbin Insurance	Swanson's Barber Shop
Blanchard Valley Health System	Huntington National Bank	TH Plastics
Bridgestone APM Company	International Fuel Systems/Ohio CAT	The Hair Stop
Car Specialties Paint & Body Shop	KeyBank	The UPS Store
Citizens National Bank	Knueven, Schroeder & Co.	United Parcel Service
Cooper Tire & Rubber Company	LaRiche Chevrolet/Cadillac	Valfilm LLC
Dietsch Brothers	LaRiche Toyota-Subaru	Whirlpool Corporation
Fifth Third Bank	MacDonald Supply	Wingate Body Shop
Findlay Armature Company	Marathon Petroleum Corporation	
Findlay Chrysler, Dodge, Jeep, Ram	Mark K	
Findlay Implement Company	McLane Corporation	
Findlay Publishing Company	Michael Eller Diamonds	
Findlay Surgical Associates Inc.	National Lime & Stone Company	
Findlay Vision Care Clinic	Ohio Automotive Supply Company	
Findlay-Hancock County Alliance	Ohio Logistics	
First Federal Bank	Old Fort Banking Company	
First National Bank	Pain Management Group	
FMT, Inc.	Peterbilt Of Northwest Ohio	



PARTICIPATING COMPANIES 2018

LIVE UNITED

AAA Findlay Automobile Club
Advanced Drainage Systems
Advanced Footcare Clinic
American Red Cross
Arcadia Auto Service, LLC
Arcadia Local Schools
Arlington Family Practice, Inc.
Arlington Local Schools
Arlington Natural Gas Company
AT&T
Ball Management/McDonalds
Ball Metal Beverage Packing Division
Bank of America
Beerco
Biggby Coffee
Bindel's Appliance
Blanchard Valley Health System
Blanchard Valley Health System (Retiree)
Blanchard Valley Medical Associates
Boy Scouts of America
Bridgestone APM Company
Cancer Patient Services
Car Specialties Paint & Body Shop
CASA/GAL of Hancock County
Century 21/Koehler & Associates
Century Health
Challenged Champions Equestrian Center
Chase Bank

Children's Mentoring Connection
Citizens National Bank
City of Findlay Employees
Coffee Amici
Columbia Gas of Ohio, Inc.
Consortia
Cooper Tire & Rubber
Cory-Rawson Schools
Dental Center of Northwest Ohio
Dietsch Brothers
Dodds & Associates Investment Services
Drake, Phillips, Kuenzli & Clark
Eastman & Smith
Edward Jones - Eric Morman
Edward Jones - Rich Rowe
ERA Geyer-Noakes Realty Group
Eyes on Main
Family Medical Associates of Findlay
Farmers & Merchants State Bank
Fifth Third Bank
Findlay Armature Company
Findlay Chrysler Dodge Jeep Ram
Findlay City Schools
Findlay Dental Group
Findlay Family Practice
Findlay Family YMCA
Findlay Hope House for the Homeless
Findlay Implement Company

Findlay Publishing Company
Findlay Surgical Associates Inc.
Findlay Vision Care Clinic
Findlay Women's Care
Findlay-Hancock County Alliance
Findlay-Hancock County Public Library
First Federal Bank
First National Bank
Fitzgerald & Mihalik, LLC
FMT, Inc.
Fresh Encounter, Inc.
Freudenberg-NOK
General Electric
Gilmore Jasion Mahler, LTD
GSW Manufacturing, Inc.
H & O Services
Hancock County Employees
Hancock County ESC
Hancock Federal Credit Union
Hancock Literacy
Heck Rentals
HHWP Community Action Commission
Hiegel Insurance
Hitchings Insurance Agency
Hixon Zuercher Capital Management
Hosler-Corbin Insurance
Huntington National Bank
IntelliHARTx

International Fuel Systems/Ohio CAT
 Keller Alge Insurance
 KeyBank
 Kirk Family of Companies
 Kirkpatrick-Behnke Funeral Home
 Knueven, Schroeder & Company
 Kramer Enterprises Inc.
 Kroger Company
 LaRiche Chevrolet/Cadillac
 LaRiche Toyota-Subaru
 Larry Nold Insurance & Financial Service
 Lawson Financial Group
 Liberty-Benton Schools
 MacDonald Supply
 Marathon Petroleum Corporation
 Mark K
 McComb Schools
 McLane Corporation
 McNaughton-McKay
 Meijer, Inc.
 Mennel Milling
 Michael Eller Diamonds
 Modern Woodmen
 Moyer Financial Services
 National Lime & Stone Company
 Northwest Family Services
 Ohio Automotive Supply Company
 Ohio Logistics
 Old Fort Banking Company
 One Energy
 Open Arms Domestic Violence
 & Rape Crisis Center

Owens Community College
 Oxley, Malone, Hollister, Warren & Spaeth
 Pain Management Group
 Peterbilt Of Northwest Ohio
 Professional Appraisal Services
 Rawson O.E.S. Chapter 550
 RCM Architects
 RE/MAX Realty/Findlay
 Resolute Wealth Advisor
 Ridge & Company CPAs
 Rooney & Associates Real Estate
 Rooney & Ranzau, Ltd.
 Rowmark, LLC
 Salvation Army
 Sawvel & Associates
 Shawnee Optical
 Shimmery Belle Boutique
 Showplace, Inc.
 Simona-PMC
 Sink's Florists
 Six Disciplines Consulting Services
 Snyder, Alge & Welch, Company, LPA
 Spectrum Eye Care, Inc.
 St. Mark's United Methodist Church
 Stall & Company CPA's
 State Farm Insurance-Dan Maciejewski
 State Farm Insurance-Denis Putman
 Streacker Tractor Sales
 Swanson's Barber Shop
 Taylor Hyundai of Findlay
 Taylor Kia of Findlay
 Taylor Volkswagen of Findlay

TH Plastics
 The Center for Safe & Healthy Children
 The Hair Stop
 The Trust Company
 The UPS Store
 Time Services
 Tour De Force
 United Insurance & Investments
 United Parcel Service
 United Way of Hancock County
 University of Findlay
 Valfilm LLC
 Van Buren Schools
 Vanlue Local School
 Walmart Stores, Inc.
 Wasbro Rental Property, LLC
 West Ohio Food Bank
 Whirlpool Corporation
 Whitman Title Security
 Window Wear, LLC
 Winebrenner Theological Seminary
 Wingate Body Shop



GASLIGHT SOCIETY MEMBERSHIP

LIVE UNITED

ALEXIS DE TOCQUEVILLE \$10,000 OR MORE

Connie & Ray Brooks
Marathon Petroleum Corporation

Thomas & Kathleen Donnell

Gary & Jane Heminger
Marathon Petroleum Corporation

Mike & Christie Hennigan
Marathon Petroleum Corporation

Brad & Sarah Hughes
Cooper Tire & Rubber

Duane & Kathy Jebbett
Rowmark, LLC

Tom & Debi Kaczynski
Marathon Petroleum Corporation

Kristina Kazarian & Dan Dunay
Marathon Petroleum Corporation\

Margaret & Scott Malaney
Blanchard Valley Health System

Michael & Bethany Needler, Jr.
Fresh Encounter, Inc.

Zan & Carl Palmer
National Lime & Stone Company

Garry & Kathy Peiffer

John & Anne Swearingen
Marathon Petroleum Corporation

Don & Carrie Templin
Marathon Petroleum Corporation

Dave & Janet Whikehart
Marathon Petroleum Corporation

James & Laurie Wilkins
Marathon Petroleum Corporation

Chuck Younger

PLATINUM \$5,000 TO \$9,999

Pamela & John Beall
Marathon Petroleum Corporation

Chuck & Dee Dee Bills
Ohio Logistics
Rooney & Associates Real Estate

John Bollman
Cooper Tire & Rubber

Rebecca & Leo Bonaparte
Marathon Petroleum Corporation

Luis Ceneviz
Cooper Tire & Rubber

Kable & Erin Derrow
Findlay Chrysler Dodge Jeep Ram

Steven & Suzanne Gagle
Marathon Petroleum Corporation

Tim & Gigi Griffith
Marathon Petroleum Corporation

Joanne Grubb
Marathon Petroleum Corporation

Ginger & Jeff Jones

Kay & Bill Kose
Blanchard Valley Health System

Rick & Liza Linhardt
Marathon Petroleum Corporation

Kevin & Libby MacDonald
MacDonald Supply

Bill & Hope McCleave
Marathon Petroleum Corporation

Douglas R. & Karen S. Melin
Marathon Petroleum Corporation

Deborah Mercer
Marathon Petroleum Corporation

Barb & Rod Nichols
Marathon Petroleum Corporation

Paul & Sarah Palmer
National Lime & Stone Company

Brian & Stephanie Partee
Marathon Petroleum Corporation

John & Julie Quaid
Marathon Petroleum Corporation

Anne & Dave Sauber
Marathon Petroleum Corporation

Steve & Diane Schult
Gilmore Jason Mahler, LTD

Gene & Elaine Stevens

Chuck & Kim Stumpp
Gilmore Jason Mahler, LTD
Consortia

Don & Lisa Wehrly
Marathon Petroleum Corporation

DIAMOND
\$2,500 TO \$4,999

Greg & Susan Allen
First Federal Savings

Brad & Carrie Allsop
Marathon Petroleum Corporation
Findlay City Schools

Chris Ball
Cooper Tire & Rubber

Dale & Betty Barwig
Marathon Petroleum Corporation

George Beranek
Marathon Petroleum Corporation

Nicole M. Busey
Marathon Petroleum Corporation

Jake & Paige Chenevey
Marathon Petroleum Corporation

Brian Clark

Lora Collins
Marathon Petroleum Corporation

Bill & Alice Conlisk

Sally & Cary Cox
Marathon Petroleum Corporation

Jaime & Elizabeth De La Cruz
Marathon Petroleum Corporation

John Dotson & Dr. Molly Senokozlieff
National Lime & Stone Company

Dr. James & Beverly Dowling

Myra M. Egbert
Marathon Petroleum Corporation

Michael Eller
Michael Eller Diamonds

John & Christine Elliott
Bridgestone APM Company

Mark & Geri Ewing
Marathon Petroleum Corporation

Mr. Roger & Dr. Katherine Fell
University of Findlay

Peter & Sue Gilgen
Marathon Petroleum Corporation

Kemp & Janine Gilts
Marathon Petroleum Corporation
Findlay City Schools

John & Stacey Gonda
Marathon Petroleum Corporation
Fifth Third Bank

Tim & Hollie Haley
Marathon Petroleum Corporation

Chris & Mary Beth Hammond
Copus Motors, Mercedes-Benz
Fifth Third Bank

Robert Hanks
Marathon Petroleum Corporation

Scott & Debbie Hapner
Marathon Petroleum Corporation

Chuck & Julie Hardesty

Eric & Jennifer Hausserman
Rowmark, LLC

John & Patti Haywood
Findlay-Hancock County Alliance
Cooper Tire & Rubber



GASLIGHT SOCIETY MEMBERSHIP

LIVE UNITED™

Jim & Jane Heck
Heck Rentals

Gary & Kathy Hirschfeld

Scott & Tonya Hohman
Resolute Wealth Advisor

Brian Hornacek
Marathon Petroleum Corporation

Bill & Karen Jones

Jerry & Susan Kern
Liberty-Benton Schools
Marathon Petroleum Corporation

Dan & Ginny Kimmel
Marathon Petroleum Corporation

John P. LaRiche
LaRiche Chevrolet/Cadillac

Dale & Sandra Laws
Whirlpool Corporation

Michael W. Lindamood

Don & Ann Malarky
Marathon Petroleum Corporation

Jim & Connie Mallamaci
Marathon Petroleum Corporation

Larry & Brenda McDaniel

Jeff & Holly McGhee
Marathon Petroleum Corporation

Andy & Britt Melton
Marathon Petroleum Corporation

Jane K. O'Neil

Chris & Dina Ostrander
CEO8 Consulting, LLC

C. Michael & Dawn Palmer
Marathon Petroleum Corporation

Ron & Jill Ranallo
Cooper Tire & Rubber

Chuck & Debbie Rice
Marathon Petroleum Corporation
Cooper Tire & Rubber

Michael & Cheryl Robinson
Marathon Petroleum Corporation

Mike & Anne Roman
Cooper Tire & Rubber

Philip Schilling
Whirlpool Corporation

Victor & Kelly Siewert
Rowmark, LLC
National Lime & Stone Company

Kevin & Sheila Skipworth
Marathon Petroleum Corporation

Tom & Jillian Strete
Marathon Petroleum Corporation

Phillip & Crissy Sutton
Marathon Petroleum Corporation

Stephen Szwast
Marathon Petroleum Corporation

Nate & Julie Tice
Marathon Petroleum Corporation

Paul & Karen Vahalik
Marathon Petroleum Corporation

Fred & Martha Walas
Marathon Petroleum Corporation

John & Barb Weber
Marathon Petroleum Corporation

Craig & Tammi Weigand
Marathon Petroleum Corporation

Blaine & Anne Wells
ERA Geyer-Noakes Realty Group
University of Findlay

Joe & Susan Wright
Marathon Petroleum Corporation
Liberty-Benton Schools

Richard & Laurie Zydonik
Rowmark, LLC
Raise the Bar

In addition, there were 2 donors
who wished to remain anonymous.

GOLD
\$1,250 TO \$2,499

Phillip D. Adams
Marathon Petroleum Corporation

Scott & Barb Akers
Marathon Petroleum Corporation
Blanchard Valley Health System

William & Karen Alge
Snyder, Alge & Welch, Co., LPA

Ramsey Aljahmi
Whirlpool Corporation

Brian Anderson
Cooper Tire & Rubber

Ryan & Deanna Aschemeier
Marathon Petroleum Corporation

Tim & Paula Ayd
Marathon Petroleum Corporation

Dave & Jodi Baker
Marathon Petroleum Corporation

Michael & Rachel Barnett
Marathon Petroleum Corporation

Chris & Jessica Beck
Rowmark, LLC

Jack & Sarah Behnke
Kirkpatrick-Behnke Funeral Home

Carl Bellman & Susan Baker
Gerald & Jeanette Bialek
Cooper Tire & Rubber

Darren Black
Marathon Petroleum Corporation

Matt & Renee Black
The Trust Company

David & Julie Blatnik
Marathon Petroleum Corporation

John & Julie Bodart
Cooper Tire & Rubber

Allen & Lori Bott
Marathon Petroleum Corporation

Jason & Andrea Broerman
Marathon Petroleum Corporation

Angela Brown
Marathon Petroleum Corporation

Patricia Brown

Don & Christine Bruce
Cooper Tire & Rubber
Findlay City Schools

Michael Burner
& Jennifer Steiner-Burner
Marathon Petroleum Corporation

Larry & Janelle Busdeker
Hancock County ESC

Karen & Justin Byers
Marathon Petroleum Corporation

Daniele & Robert Calmus
Marathon Petroleum Corporation

Jim & Brigitte Carpenter
Marathon Petroleum Corporation

Steve & Cindy Clark
Marathon Petroleum Corporation

Jeannine Clark
National Lime & Stone Company

James & Melanie Clarke
Marathon Petroleum Corporation

David & Laurie Cody
Kroger Company
Marathon Petroleum Corporation

Todd Coffman
Marathon Petroleum Corporation

Matt & Julie Cordonnier
City of Findlay
Marathon Petroleum Corporation

Dr. Frank & Kim Cosiano
Findlay Family Practice

Jean & Lance Cunningham
Marathon Petroleum Corporation

Dave & Barb Cytlak
Blanchard Valley Health System
County Wide Sports

Dr. Jim & Wendy Davidson
Blanchard Valley Health System



GASLIGHT SOCIETY MEMBERSHIP

LIVE UNITED

Dr. Michael & Jennifer Denike
Blanchard Valley Health System

Randall & Anne Diehl
Financial Strategies Group
Marathon Petroleum Corporation

David & Jodie DiRe
Marathon Petroleum Corporation

Chad & Jennifer Doll
National Lime & Stone Company

René Dore
Cooper Tire & Rubber

Beth & Jim Duron
Marathon Petroleum Corporation

Bob & Debora Edds
Marathon Petroleum Corporation

Todd & Kristi Eilerman
Marathon Petroleum Corporation

Joe & Tracey Ernst
Marathon Petroleum Corporation

Joyce & Gene Fernandez
Marathon Petroleum Corporation

Nick & Beverly Ferris
Marathon Petroleum Corporation

Woody & Rae Gearheart
Marathon Petroleum Corporation

David & Carrie Glass
Findlay Publishing Company

Don & Linda Gruenemeyer
Sawvel and Associates

Alan & Amy Hackenberg
City of Findlay
First Federal Bank

Nathan & Betsy Hackworth
City of Findlay
Old Fort Banking Company

Kris Hagedorn
Marathon Petroleum Corporation

Rob & Bridget Hammer
Mennel Milling
Blanchard Valley Health System

Matt & Stacy Hartman
Tour De Force

Phil & Peggy Havens
Brookview Homes

Jim & Stacy Hedrick
Marathon Petroleum Corporation

Wade & Beth Hinshaw
Marathon Petroleum Corporation
St. Michael School

Bill & Karen Hoban
Cooper Tire & Rubber

Mike & Kathy Huber
Marathon Petroleum Corporation

Brian Hurt
Marathon Petroleum Corporation

Takeo Inthavong
Kramer Enterprises Inc.

Jeff & Becky Iten
Marathon Petroleum Corporation

Mark & Chris Johnson
Marathon Petroleum Corporation

Creg & Kim Jordan
Marathon Petroleum Corporation
Arcadia Local Schools

Glenn & Susan Jost

Jeff & Jennifer Kamm
Cooper Tire & Rubber

Michael T. & Dana Kaser
Whirlpool Corporation

Scott & Christine Keller
ERA Geyer-Noakes Realty Group
Blanchard Valley Health System

Marilyn & Doug Kerr

Michael & Carol Key
Marathon Petroleum Corporation

Andrea Kramer
City Apparel

Tim & Beth Kroetz

Tim & Kathy Krucki
McNaughton-McKay
Ohio Property Group, Inc.

David & Gwen Kuenzli
Drake, Phillips, Kuenzli & Clark

Stacey & Tim Kuhn
Marathon Petroleum Corporation

Robert & Tiare LaRiche
LaRiche Toyota Subaru

Bruce & Mary Ellen Lazar
Marathon Petroleum Corporation

David & Colleen Lazar
Gages-Findlay
Gordon Flesch Company

Vince & Michele Lichtinger
Marathon Petroleum Corporation

John & Kay Livingston

Kyle Lockmiller
Marathon Petroleum Corporation

Dean & Jennifer Lydey
Marathon Petroleum Corporation

Shawn & Connie Lyon & Family
Marathon Petroleum Corporation

John Maguire & Anne Shiple
Marathon Petroleum Corporation
Century Health

Brad & Nikki Martin
Marathon Petroleum Corporation

Jorge & Estela Marzari
Marathon Petroleum Corporation

Henry & Angela Matthews
Marathon Petroleum Corporation

Rick & Melanie Mattingly
Marathon Petroleum Corporation

Amanda & Steve McClellan
Marathon Petroleum Corporation

Brad & Lori McKamey
Marathon Petroleum Corporation

Dennis & Sharyn McPherson
Findlay City Schools

Drew & Lydia Mihalik
Fitzgerald & Mihalik, LLC
State of Ohio

Tim & Ann Miller
Marathon Petroleum Corporation

Alice & Walter Miller
Marathon Petroleum Corporation

George & PJ Milligan

Kim & Greg Moore
Marathon Petroleum Corporation

Eric & Melissa Morman
Edward Jones

Karil Morrissey
Cooper Tire & Rubber

Amber & Matt Moser
Marathon Petroleum Corporation

Brian & Kelly Niese
Marathon Petroleum Corporation

Lauri & Ted Oakes
Marathon Petroleum Corporation

Michael A. Padula Jr.

Christian Pedersen & Kerry Kirk
The Kirk Family of Companies
Meaningful Wellness

Shane Pfeleiderer
Marathon Petroleum Corporation

Mark & Kimberly Plesec
Cooper Tire & Rubber
Findlay City Schools

J.J. & Alissa Preston
First Federal Bank
Findlay-Hancock County Alliance

Todd & Judy Pusateri
Mennel Milling
United Way of Hancock County

Andrew & Amy Puthoff
Marathon Petroleum Corporation

Tim & Diane Puthoff
Marathon Petroleum Corporation

Dayna Reid
Marathon Petroleum Corporation



GASLIGHT SOCIETY MEMBERSHIP

LIVE UNITED

Scott Rhodes & Family
National Lime & Stone Company
Marathon Petroleum Corporation

Pamela Ricker
Marathon Petroleum Corporation

Harold & Jennifer Rinehart
Marathon Petroleum Corporation
Valerie & Jeff Roszman
Marathon Petroleum Corporation

Daryl & Cyndy Rotman
Marathon Petroleum Corporation

Ken & Denise Rowles

William E. & Donna L. Ruse
RE/MAX Realty/Findlay

Susan & Grant Russel
Marathon Petroleum Corporation

Josh & Kim Schaublin
Marathon Petroleum Corporation

Jeff & Brenda Schroeder
Cooper Tire & Rubber

Bob & Betsy Schutz
Blanchard Valley Health System

Curt & Lisa Selhorst
Cooper Tire & Rubber

Dave & Whitney Serr
Marathon Petroleum Corporation

Jeff & Denise Sexton
Marathon Petroleum Corporation
Michael Shaffer
Apple A Day

Dave & Teresa Shonebarger
Rowmark, LLC
Century Health

John & Teagan Simmons
Marathon Petroleum Corporation

Jeff & Char Simons
Marathon Petroleum Corporation
Danberry Realtors

Andrea J. Clinger Sprouse
Marathon Petroleum Corporation

Michael Sprowls
Owens Community College

Josh & Angie Swaney
Marathon Petroleum Corporation

Angela Swavel
Valfilm LLC

Ronda & Patrick Tendam
Marathon Petroleum Corporation
John & Jackie Urbanski

Elizabeth B. Waddell
First Federal Bank

Lauren & Laddie Weems
Marathon Petroleum Corporation

Doug & Stephanie Wendt
Marathon Petroleum Corporation

Clair & Diana Winebar
Marathon Petroleum Corporation

John & Tracy Winstel
Cooper Tire & Rubber

Duane & Kim Wires
Eyes on Main

Jeff & Jane Wobser
Marathon Petroleum Corporation

Travis & Megan Wolfinger
Marathon Petroleum Corporation

Christopher & Kathy Young
Marathon Petroleum Corporation
Findlay City Schools

Steven Zerby
Owens Corning

Bruce Zitkovic & Julia Walsh
Dow Chemical
Marathon Petroleum Corporation

Jeff & Stephanie Zuech
Marathon Petroleum Corporation

Richard & Karen Zunkiewicz

In addition, there were 12 donors
who wished to remain anonymous.

SILVER
\$750 TO \$1,249

Tim & Cindy Adams
Marathon Petroleum Corporation

Elaine Adkins
Marathon Petroleum Corporation

Jim & Anne Albert

Chris & Nichole Alexander
The First National Bank
Blanchard Valley Health System

Roy & Kay Alexander
Cooper Tire & Rubber

Phil & Toni Alge
Keller Alge Insurance

Dave & Terri Amann
Marathon Petroleum Corporation

Craig & Mary Lou Anderson

Glenn & Ann Arbaugh
Cooper Tire & Rubber
Rowmark, LLC

Dr. Greg & Cynthia Arnette
Blanchard Valley Health System

Sandra L. Arnold
Marathon Petroleum Corporation

Robert & Berniece Asel
Jennifer Badia-Ranker
Blanchard Valley Health System

Daniel & Katherine Baker
Marathon Petroleum Corporation
Tim & Sid Barth
Marathon Petroleum Corporation

David & Shelly Beal
Marathon Petroleum Corporation

James & Kimberly Beck
Marathon Petroleum Corporation

Patricia Beham
Blanchard Valley Health System

Mr. & Mrs. Bradley Bell
Marathon Petroleum Corporation

Dennis & Debbie Benson
Marathon Petroleum Corporation

Kim Benson
Marathon Petroleum Corporation

Molly Benson
Marathon Petroleum Corporation

Scott & Holli Bilske
Marathon Petroleum Corporation

Nicole Birchall
Marathon Petroleum Corporation

Marc & Erika Bishop
Marathon Petroleum Corporation

Dr. Eric Bostick
Imaging Consultants of Findlay, Inc.

E. Asa Bour
Marathon Petroleum Corporation

Suzette Boyd
Hancock Federal Credit Union

Don & Becky Bozell

William & Angie Briggs
Biggby Coffee

Susan Brooks
University of Findlay

Clifford Browne

Kathleen Brubaker

Michael & Melanie Buff
Marathon Petroleum Corporation

Craig & Lori Beth Burnside
Old Fort Banking Company
Findlay City Schools

Joan & John Califf
Marathon Petroleum Corporation

Vince Castellaneta
Cooper Tire & Rubber

Dr. Daren Cheney & Dr. Lisa Knor
Family Medical Associates of Findlay

Chuck & Paula Clapper
Sink's Florists



GASLIGHT SOCIETY MEMBERSHIP

LIVE UNITED™

Don & Brenda Collins

Jonathan & Julie Coombes
Marathon Petroleum Corporation

Travis & Emily Cordes
Rowmark, LLC

Jonathan Davis

Judge Allan Davis

Larry Davis
Marathon Petroleum Corporation

Theresa Davis
Marathon Petroleum Corporation

Dan & Linda DeArment
APTIM
Blanchard Valley Health System

Reuben & Mary Debolt

Melissa Depinet
Cooper Tire & Rubber

Tim DiBerardino
National Lime & Stone Company

Robert & Ann Dickmann
Marathon Petroleum Corporation

Steve & Angie Dittman
Marathon Petroleum Corporation
Findlay City Schools

Stan & Lela Doty

Theresa Douglas
Blanchard Valley Health System

Bill & Maile Doyle
University of Findlay
Habitat for Humanity

William Dusseau
Cooper Tire & Rubber

Robert A. & Ann M. Ebright, Sr.
Marathon Center for the Performing Arts
Blanchard Valley Health System

Jim & Patti Eckhardt
Marathon Petroleum Corporation

Christoph Egel
Cooper Tire & Rubber

David & Karen Eubanks

Anthony Fenstermaker
McComb Schools

James & Margaret Ford
Rowmark, LLC

Larry & Lori Foster
Marathon Petroleum Corporation

David & Wendy Foulke
Marathon Petroleum Corporation

Mark & Amy Fox
Blanchard Valley Medical Associates

Chelsea Fraker
Marathon Petroleum Corporation

Scott Freehafer
University of Findlay

Mr. & Mrs. Matthew Freeman
Marathon Petroleum Corporation

Beth Fulk
Cooper Tire & Rubber
Joe & Lisa Fulton

Paul Fultz
Fifth Third Bank

Pat Garlock
AAA Findlay Automobile Club

Sarah K. Garner
Marathon Petroleum Corporation

Anthony Gattuso
Marathon Petroleum Corporation

Tim & Tina Gephart
Knueven, Schroeder & Co.
Findlay City Schools

Karen & David Gerardi
Marathon Petroleum Corporation
Blanchard Valley Health System

Mark Gephart
Fresh Encounter, Inc.

Adam & Jennifer Gibson
Marathon Petroleum Corporation

Laura Goetz
Cooper Tire & Rubber

Joshua Goodwin
Marathon Petroleum Corporation

Kimberly Gould
Marathon Petroleum Corporation

John & Jody Graham
Marathon Petroleum Corporation

Scott & Jacqueline Gray
Six Disciplines Consulting Services

Melissa Greenlee
Whirlpool Corporation

Doug & Linda Hamilton
West Ohio Food Bank

Terry Hamilton
Marathon Petroleum Corporation

Joe & Cathy Hanson
Marathon Petroleum Corporation

Brent Harris
Marathon Petroleum Corporation

Michael & Patricia Harris

Dr. & Mrs. Robert Heacock
Blanchard Valley Health System
Arlington Local Schools

Larry & Heather Heilman
JEHM Enterprises
United Way of Hancock County

Tim & Deb Helfrich
First Federal Bank

Eric Helms
Marathon Petroleum Corporation

Dr. Jack & Candace Hendershot
University of Findlay

Gregory & Karen Herold
Marathon Petroleum Corporation
Findlay City Schools

Doug & Kelly Hiegel
Hiegel Insurance

Lionel K. Higley
AEP Ohio

Jackie & Tim Hitchings
Cooper Tire & Rubber

JC Hodes
Marathon Petroleum Corporation

Steve & Laura Hoehne
Marathon Petroleum Corporation

Dr. Robert & Caroyl Hollis
Blanchard Valley Health System

Robert B. & Patty K. Hollister
Oxley, Malone, Hollister, Warren
& Spaeth

Janet & Al Holtzsch

Lucas & Tara Houser
Marathon Petroleum Corporation

Tom & Ann Hrcncir
Marathon Petroleum Corporation

Jon & Cathy Huffman
Cooper Tire & Rubber

Douglas Hughes
Blanchard Valley Health System

Greg & Beth Hull
United Insurance & Investments

Josh Hunker
Cooper Tire & Rubber

Jeff Hyre
Fifth Third Bank

Gregory Jackson
Marathon Petroleum Corporation

Scott Jamieson
Cooper Tire & Rubber

Steven & Kimberly Johnson
Marathon Petroleum Corporation

Bob & Sue Kamphaus
Marathon Petroleum Corporation

Tom & Faye Kelley
Marathon Petroleum Corporation

Dan & Lisa Kendrick
Huntington Bank
Van Buren Schools



GASLIGHT SOCIETY MEMBERSHIP

LIVE UNITED™

Dr. Michael & Melanie Kerns
University of Findlay

Jordan & Christy Kisseberth
Rowmark, LLC

Bethany & Casey Klein
Marathon Petroleum Corporation

Michael & Kristina Knoll
Marathon Petroleum Corporation
Promedica

John & Jennifer Koch
Marathon Petroleum Corporation

Phil & Joyce Kortokrax
Cooper Tire & Rubber

Paul & Pam Kramer
Kramer Enterprises Inc.

Brian & Tracy Kreinbrink
Marathon Petroleum Corporation

Mark Kreinbrink
Cooper Tire & Rubber

Rod Kreinbrink
Cooper Tire & Rubber

Marion Kroetz

Ron & Marge Kruse

Craig & Jill Kuhlman
Marathon Petroleum Corporation

Denny & Joanie Kummerer

Cindy Larrigan
Gilmore Jason Mahler, LTD

Nik & Laura Larsen
Marathon Petroleum Corporation

Denny Laube & Jodee Philo
Marathon Petroleum Corporation

Tim & Karmen Lauth
Cooper Tire & Rubber
Hancock County Job
& Family Services

Phil & Carol Lawson
Lawson Financial Group

Deb Lee
Fifth Third Bank

Jaime Lehtomaa
Findlay Hope House for the Homeless

Robert Leipheimer
Marathon Petroleum Corporation

Joshua & Deborah Lemmermen
Marathon Petroleum Corporation

Dustin Lester
Whirlpool Corporation

Art & Beth Lewandowski
Marathon Petroleum Corporation

Kathryn Lewis
Findlay Dental Group

Mike & Michelle Lewis
Lewis Rachel Insurance
Findlay City Schools

John & Denese Malacos
University of Findlay

Patrick Manders
Marathon Petroleum Corporation

Larry Manley & Cheryl Buckland

Patrick & Nikki Matheny
Marathon Petroleum Corporation

Jim & Tina Mathias
City of Findlay

George McAfee & Family

Patrick McCaffrey
Marathon Petroleum Corporation

Jay & Anne McCracken
Cooper Tire & Rubber

Lauren R. McCullough
Marathon Petroleum Corporation

Paul & Denise McCutcheon
Cooper Tire & Rubber

Christopher & Christine McDaniel
Marathon Petroleum Corporation

Cole McMath

Paul Meyer
Whirlpool Corporation

Larry & Tricia Miles
Bill & Gail Miller

Bradley & Emily Miller
Marathon Petroleum Corporation

Greg Mohr & Chris Neely
Window Wear, LLC

Michael & Debra Momany
United Way of Hancock County

Nancy Moody Russo

Jerry & Tamera Morehart
Marathon Petroleum Corporation

Paul E. Moyer
Moyer Financial Services

Nate & Stacy Muehl
Marathon Petroleum Corporation

Ralph & Dawn Mullinger

Jason & Bridgett Mundy
Blanchard Valley Health System

Stephen Nelson
Marathon Petroleum Corporation

Judge Joe & Beth Niemeyer

Jeff & Jill Oakleaf
Marathon Petroleum Corporation

John W. Oberlin
Marathon Petroleum Corporation

Kurt & Cassie Ohlrich
Mennel Milling
Hancock County ESC

Kevin & Susan Pancake
Findlay Publishing Company
The First National Bank

Tom & Sue Pasche
Marathon Petroleum Corporation

Barbara J. Pasztor
Blanchard Valley Health System

Mary Pauken
Cooper Tire & Rubber

Michael & Susan Pepple
First Federal Bank

Tom & Kelly Perrone
Marathon Petroleum Corporation

Tim & Katie Peterkoski
Marathon Petroleum Corporation

Dale & Annette Peverly
Marathon Petroleum Corporation

Gretchen N. Plewak
Marathon Petroleum Corporation

Tony & Marti Price
National Lime & Stone Company

Greg & Christina Qualls
Marathon Petroleum Corporation
Findlay City Schools

Gerald & Nancy Rader

David & Diane Ragless
Operational Support Systems
First Federal Bank

Nick & Christie Ranzau
Jaqua's Fine Guns
Rooney & Ranzau, Ltd/
Flag City Title Agency

Dr. Nathaniel & Twinkle Ratnasamy
Blanchard Valley Health System

Peter & Elaine Reynolds
Marathon Petroleum Corporation

Norm & Kay Reynolds
Marathon Petroleum Corporation

Robin L. Ridge
Ridge & Company CPAs

Andrew Rill
Fresh Encounter, Inc.

Steve & Marcia Roberts
Marathon Petroleum Corporation

Tim & Cindy Rodman
Marathon Petroleum Corporation
St. Michael School

Dan & Emily Romick
First Federal Bank



GASLIGHT SOCIETY MEMBERSHIP

LIVE UNITED™

Tim & Sharon Rooney
Rooney & Associates Real Estate

Rich Rowe
Edward Jones

Harold R. "Puck" Rowe Sr.

George Rustemeyer
Cooper Tire & Rubber

Pat & Brigitte Sadowski
Eastman & Smith
Marathon Petroleum Corporation

Dr. Daniel J. Sak
Blanchard Valley Health System

Tim & Lori Sandford
Marathon Petroleum Corporation

Pami & Polly Sandhu
Marathon Petroleum Corporation
Fran Schaefer

Gregory R. Schermerhorn
Marathon Petroleum Corporation

Donald & Shirley Schleucher

Wade & Jen Schoenberger
Rowmark, LLC

Sarah & TJ Schott
Marathon Petroleum Corporation

Daniel & Andrea Sensel
Marathon Petroleum Corporation

Josh Shaferly
Whirlpool Corporation

Thomas & Stacy Shaw
Marathon Petroleum Corporation
Children's Mentoring Connection

Eric Short & Jamie Twining
Simona-PMC
Rowmark, LLC

Jeff & Elsa Shrader
Farmers & Merchants State Bank
Findlay City Schools

Richard Shultis
Marathon Petroleum Corporation

Steve & Diane Schut
Marathon Petroleum Corporation

Gaven Smith
Fifth Third Bank

Greg & Amy Smith
Marathon Petroleum Corporation

Megan Smith
Fifth Third Bank

Patricia M. Smith

Nigel & Vera Snelling

Barbara & Dan Snyder
Snyder, Alge & Welch, Co., LPA

Ed & Melissa Solt
Marathon Petroleum Corporation
Dr. Jimmy R. Sorrells

Jenn Spears
Marathon Petroleum Corporation

Kevin & Missy Spradlin
Whirlpool Corporation

John Staler
Marathon Petroleum Corporation

Anna Staley
Marathon Petroleum Corporation

Diana Starkey
Marathon Petroleum Corporation

Boyd & Sara Stewart
Marathon Petroleum Corporation

Lissa Streacker
Huntington National Bank

Phil & Kathryn Strong
Marathon Petroleum Corporation

Wen-Chen Su
Cooper Tire & Rubber

Jeff & Marie Swaisgood
Blanchard Valley Health System

Graham & Denise Thomas
First Federal Bank

Bob & Tammy Thompson
Cooper Tire & Rubber
Marathon Petroleum Corporation

Todd & Cynthia Thompson
Marathon Petroleum Corporation

Chris & Kelley Tichenor
Marathon Petroleum Corporation

Jim & Sara Tomlinson
Marathon Petroleum Corporation

Bonnie Torti
Whirlpool Corporation

Stephen & Lisa Towell
Marathon Petroleum Corporation

Kevin & Jennifer Traxler
Marathon Petroleum Corporation

Vincent & Candy Unger
Marathon Petroleum Corporation
St. Michael School

Thomas Vail
Advanced Footcare Clinic

Steve & Staci Vajen
Marathon Petroleum Corporation

Matthew & Lisa Vick
Marathon Petroleum Corporation
Omnicare

Rod & Candy Walton
First Federal Bank
Rowmark, LLC

David & Amy Warren
CenturyLink

Jack & Jeanne Wasbro
Wasbro Rental Property, LLC

Rick & Deb Watson

Robert & Marjorie Weaver

Chris Webb
Blanchard Valley Health System

Ty & Emily Weber
Marathon Petroleum Corporation

Bob & Mary Westphal
Blanchard Valley Health System

Tony & Elaine Whaley
Marathon Petroleum Corporation
Chase Bank

Brian & Teresa White
City of Findlay
United Way of Hancock County

Jeff & Sharie Whitman
Whitman Title Security

Robert & Vanessa Williams
Marathon Petroleum Corporation
St. Michael School

Tom & Teresa Winkeljohn
Ohio Automotive Supply Co.

Bill & Lisa Wintrow
Marathon Petroleum Corporation

Ron & Linda Wolery
Marathon Petroleum Corporation

Matt Wood
First Federal Bank

Patrick & Kristin Woodhull
Marathon Petroleum Corporation
Findlay City Schools

Patrick & Amanda Wren
Marathon Petroleum Corporation

Jim & Kari Zellner
AIM Media
Findlay Publishing Company

Mark & Beth Zeto
Marathon Petroleum Corporation

Adam & Patricia Zickert
Cooper Tire & Rubber

Adam & Amy Zuercher
Hixon Zuercher Capital Management

Ronald A. Zydonik
Rowmark, LLC

In addition, there were 15 donors
who wished to remain anonymous.





United Way
of Hancock County

LIVE UNITED®

**245 Stanford Parkway
Findlay, OH 45840**

419-423-1432

liveunitedhancockcounty.org